



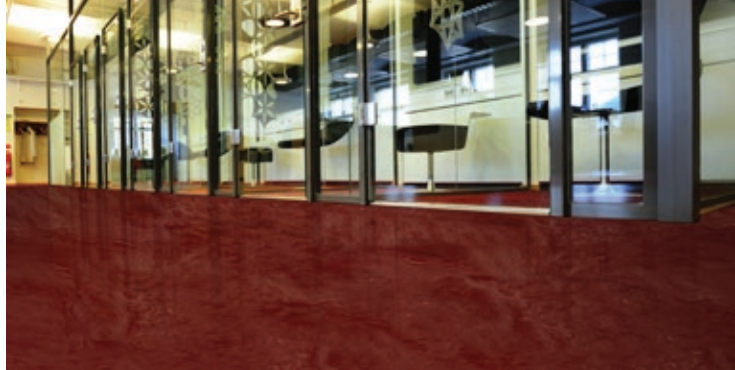
# Metallic



## Heavy Metal Characteristics:

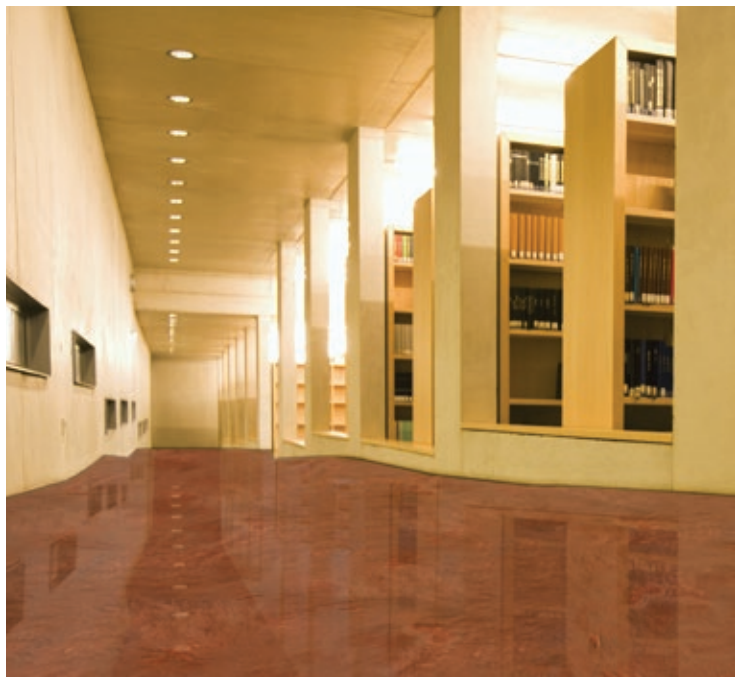
- ▶ **FAST and TOUGH** metallic system.  
*(Return to service in 24 hrs.)*
- ▶ Has a marbled pearlescent metallic finish.
- ▶ Easy to maintain - no waxing or upkeep needed!
- ▶ Use on concrete, wood and tile.





## Metallic System

Metallic tints produce marbled floor coatings with pearlescent and iridescent gleaming finishes. These lustrous floor coatings are the newest solutions for commercial applications, restaurants, and showrooms looking for a distinctive, rich-looking floor.



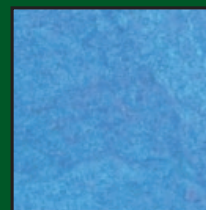
## PolyCuramine™

Clear Base and Topcoat

PolyCuramine™ is an odor free, interior clear base, which serves as the foundation of a multitude floor systems. It provides incredible abrasion resistance and extreme chemical resistance. This product combines key attributes from multiple chemistries into one indestructible, self-leveling, flexible, fast curing, high gloss coating system.



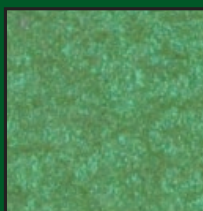
**Blue Sky**



**Blue Thunder**



**Cherry Bomb**



**Green Grass**



**Gun Metal**



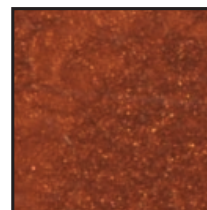
**Silver Bullet**



**Copper Pot**



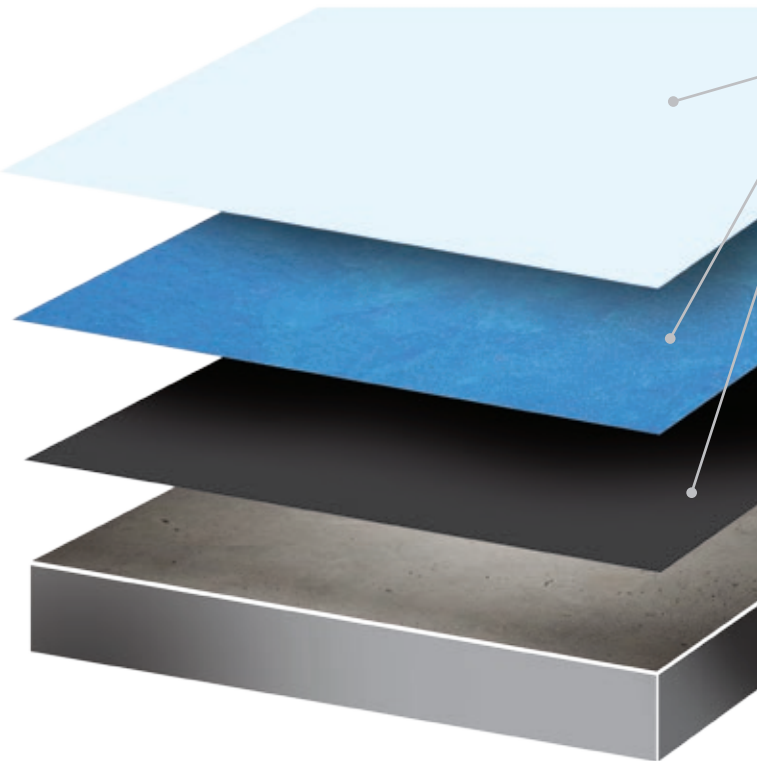
**Gold Nugget**



**Tarnished Brass**

# Project Spotlight: Boat Dealership

This boat dealership wanted to create a custom look for their showroom with a quick return to service. The solution was a **BLUE THUNDER METALLIC FLOOR**.



- **Optional Clear Top Coat** (*optional Ultra Durability Plus Additive*)
- **PolyCuramine™ with Metallic Tint**
- **Fast Cure Primer**



Contact us for more information (608) 209-1507

[www.garageforce.us](http://www.garageforce.us)



**GARAGE**  **FORCE™**

**[www.garageforce.us](http://www.garageforce.us)**  
**(608)209-1507**